



Some very clever students and their delicious cookies at the Meri Kirihimete Cookie Decorating classes, with tutor Jo Smith

News from Dunedin WEA

Who can believe we're nearly at Christmas already? This year has just about disappeared, but it's lovely to reflect back on how much we've grown - from 93 students in 2021 to 315 this year!

As our President Mary Geary has written on the next page, we've greatly increased our variety of classes and while this is really exciting, it also means we need to start adapting to meet

these developments. As you look through our [Term 1 programme](#), you might notice a few little changes - we'll be using another venue for some classes (the very comfy Te Whānau Arohanui hall on Victoria Rd), while many will remain at the trusty South Dunedin Community Network. You'll also see that we've been working on improving the consistency of materials funding between classes. For many classes, this means no change, while for some you may see a small increase in fees, or a list of materials to bring with you. We've tried hard to keep any fee increases low, as equity and accessibility are very important to us - and don't forget we still offer a 50% discount for Community Services Card holders!

On a personal note, as I move on to my next adventure, I'd like to say goodbye and thank you to all the amazing people I've met during my time at DWEA - the committee, tutors and students. You've all made this job an absolute joy and I know the new Programme Coordinator will be in great hands! Best wishes to all of you, and thanks so much for all your kindness and support over the past two years!

-Nicola



Fantastic range of dog portraits, from our Intro to Drawing class in Term 3, with tutor Nancy McLennan Hughes

PRESIDENT'S PIECE

Tēnā koutou katoa,

Nāku te rourou nāu te rourou ka ora ai te iwi - With your basket and my basket, we will sustain everyone.

Here we are at the end of 3 years of Dunedin Workers' Educational Association Te Wahi Ākoranga o Ōtepoti, and what a wonderful journey it has been so far. We started with four tutors delivering five classes and have rapidly grown: in 2023, we had 17 different classes that were delivered a total of 44 times this year, by 12 tutors. I want to take this opportunity to thank both our tutor team and the supportive governance committee who have made this growth possible.

In September, we took part in the Festival of Adult Learning Ahurei Ākonga and celebrated our growth by sharing our classes at an exhibition at the South Dunedin Community Network rooms. The work displayed was a testament to the quality of our tutors and demonstrated variety, uniqueness and heaps of talent from our students. Thank you to all tutors and students who contributed to this day.

Our big news is that our Programme Coordinator, Nicola Pye, is leaving us after two years to pursue other opportunities including working for 'Dream South D', and some personal study. I have written a separate piece to acknowledge Nicola's contribution to DWEA - we will miss her! As this newsletter goes to print I can confirm that we have appointed Kirsty Clark as our new Programme Coordinator. Kirsty will come on board in mid February - we look forward to welcoming her to our DWEA family.

I do hope you will continue your learning journey with us in 2024. There are some fantastic classes on offer. We look forward to your enrolments.

Wishing you all a safe and Meri Kirihimete and a happy and fun filled New Year.

Ngā mihi nui,
Mary Geary, President



A stunning little quilted Christmas bag made by student Danette Little. Tutor Mary Geary said "It's great to see WEA students stretching their wings and sharing their talents. Your tutor felt very proud Danette!"

DWEA NEWS



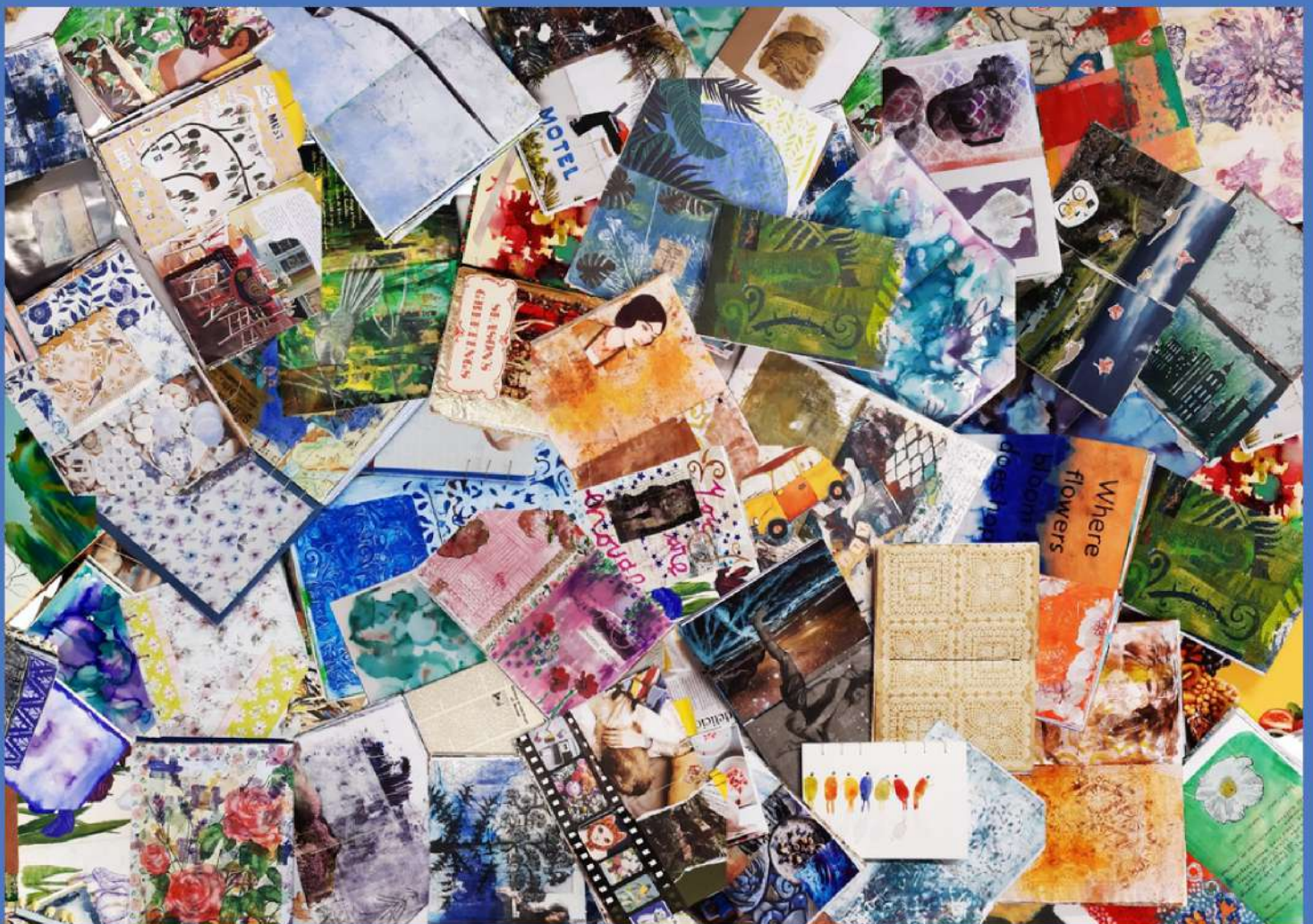
New class in Term 1: Quirky Coil Baskets!

Create your own unique fabric coil bowl, individualised by choosing your own cotton fabrics and colour scheme! These vessels are fully washable with diverse uses. Basic sewing skills required and BYO sewing machine for this fun new class.

One of our founding tutors, Sue Cheer, is taking a year away from tutoring in 2024.

Sue's 'Art Journaling for Beginners' class has been so popular over the last few years, and we've really appreciated her generous and thoughtful governance input. Luckily, she'll still be on our committee, for which we're very grateful, and we wish her well as she devotes this time to her beautiful art. We can't wait to see what she makes next!

well as she devotes this time to her beautiful art. We can't wait to see what she makes next!



A collage made by Art Journaling tutor Sue Cheer, using images from many of her students' created pages



Dunedin WEA

Te Wāhi Ākoranga o Ōtepoti

TERM 1, 2024 PROGRAMME ADULT EDUCATION AND COMMUNITY CLASSES

TE REO

- TE REO WITH REWA

ARTS

- INTRODUCTION TO DRAWING
- ART OF BEGINNERS MĀORI RARANGA
- HOW TO PAINT 1
- SLOW STITCHING VESSELS
- PHOTOGRAPHY: GETTING STARTED
- WONDERFUL WATERCOLOUR PART 1

CRAFT

- MASTERING MACHINE APPLIQUÉ
- CROCHET FOR BEGINNERS
- KNITTING FOR BEGINNERS AND ABOVE
- QUIRKY COIL BASKETS



**turn over
for more
details!**



Our classes are held in venues around South Dunedin.

50% discount on class fees for Community Services Card holders, upon verification.

For more info or to enrol go to: www.dunedinwea.org.nz

Dunedin WEA

Adult education and community classes Term 1, 2024 programme

ART OF BEGINNERS MĀORI RARANGA with Lucy Smith

10am - 1pm, Sundays 11 Feb - 3 Mar, \$80

CROCHET FOR BEGINNERS with Alison Ford

6 - 8pm, Tuesdays 13 Feb - 19 Mar, \$80

HOW TO PAINT 1 with Nancy McLennan Hughes

10am - 4pm, Sundays 7 AND 21 Apr, \$80

INTRODUCTION TO DRAWING with Nancy McLennan Hughes

7 - 9pm, Thursdays 15 Feb - 21 Mar, \$90

KNITTING FOR BEGINNERS AND ABOVE with Alison Ford

6:30 - 8:30pm, Thursdays 15 Feb - 21 Mar, \$80

MASTERING MACHINE APPLIQUÉ with Mary Geary

9am - 3pm, Saturdays 2 March AND 6 April, \$85

(BYO sewing machine)

PHOTOGRAPHY: GETTING STARTED with Paul Donovan

7 - 9:30pm, Mondays 12 Feb - 4 Mar, \$70

QUIRKY COIL BASKETS with Mary Geary

9am - 3pm, Saturday 13 Apr, \$60

(BYO sewing machine)

SLOW STITCHING VESSELS with Chrissy Hollamby

10am - 4pm, Sunday 10 Mar, \$50

TE REO WITH REWA with Rewa Elliot-Sharpin

5:30 - 7:00pm, Mondays 19 Feb - 22 Apr, \$80

(no classes on public holidays)

WONDERFUL WATERCOLOUR PART 1 with Ron Esplin

10am - 4pm, Sunday 10 Mar, \$75

Our classes are held in venues around South Dunedin.

50% discount on class fees for Community Services Card holders, upon verification.

For more info or to enrol go to: www.dunedinwea.org.nz



E hāere ana taku hoa!

It is with sadness that we, the DWEA committee, accepted the resignation of our Programme Coordinator, Nicola Pye, at our October meeting. Nicola has been a major contributor to our continued success and we are sad to be saying goodbye. We know that Nicola wishes to pursue some new opportunities, including some study, and we wish her the very best for her new adventures. We will miss that infectious smile and the sheer energy and enthusiasm that Nicola has for adult education – our loss is Dream South D's gain. It has been a great ride, Nicola – thank you and go well.

Mary Geary
President

If you'd like to submit anything for our next newsletter, please email our Programme Coordinator at hello@dunedinwea.org.nz

The Gratitude Column

Thank you so much to our generous funders – they literally keep us going! And thanks as always to the South Dunedin Community Network for the use of their rooms, which we so appreciate.



Dunedin City



Lottery Grants Board
Te Puna Tahua
LOTTO FUNDS FOR YOUR COMMUNITY